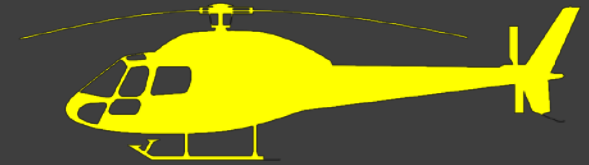


Multi-Mode User Input for Mobile Clinical CASIC Systems

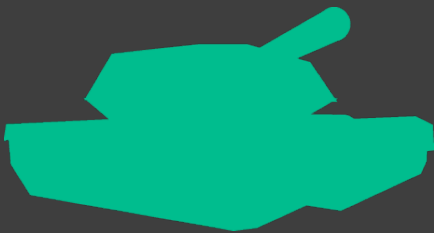


Presented by Liz Woolley and Tiffanni Reidy of IDCRP

Disclaimer



The views expressed in this presentation are those of the authors and do not necessarily represent the views of the Henry M. Jackson Foundation for the Advancement of Military Medicine, Inc., Uniformed Services University of the Health Sciences, or the Department of Defense (DoD).



Military Travel

IDCRP conducts clinical trials and other medical research of significant interest to the United States Department of Defense, including a US military travel-related illness study.

The TravMil study prospectively evaluates infectious disease risks, and the effectiveness of prevention and treatment strategies, in DoD beneficiaries traveling outside the continental United States.

Subject enrollment and data collection is conducted at six clinical sites.



TravMil Requirements

Four different versions of similar survey content depending on:

- Enrollment before or after travel
- Traveling for leisure vs. deployment

Subjects complete the self-guided survey on mobile system

Research coordinators :

- Enter surveys
- Review surveys
- Update surveys

Options for build:

- Four stand-alone surveys
- Combine into one survey interface



Entry System Solution

Electronic forms created with Mi-Forms software

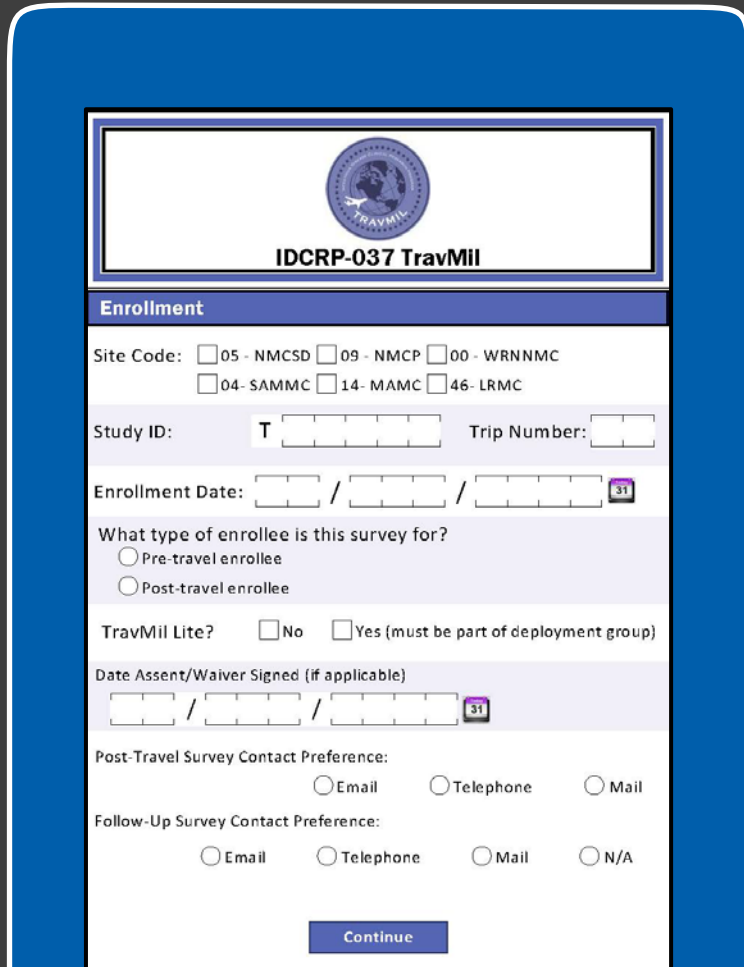
Windows 8 tablets

Offline data capture

Stylus input with immediate handwriting recognition

Dynamic adaptive design: multiple user modes for clinic employee or subject-facing survey environment

Can direct data to multiple data sets from one entry interface



The image shows a tablet displaying the IDCRP-037 TravMil enrollment form. The form is titled "IDCRP-037 TravMil" and features a logo at the top. The form is divided into several sections: "Enrollment", "Site Code", "Study ID", "Trip Number", "Enrollment Date", "What type of enrollee is this survey for?", "TravMil Lite?", "Date Assent/Waiver Signed (if applicable)", "Post-Travel Survey Contact Preference", and "Follow-Up Survey Contact Preference". The form includes various input fields, checkboxes, and radio buttons. A "Continue" button is located at the bottom of the form.



IDCRP-037 TravMil

Enrollment

Site Code: 05 - NMCS D 09 - NMCP 00 - WRNNMC
 04 - SAMMC 14 - MAMC 46 - LRMC

Study ID: T 5 0 0 9 7 Trip Number: 1

Enrollment Date: 1 3 / F e b / 2 0 1 5

What type of enrollee is this survey for?

- Pre-travel enrollee
- Post-travel enrollee

TravMil Lite? No Yes (must be part of deployment group)

Date Assent/Waiver Signed (if applicable)

/ / 31

Post-Travel Survey Contact Preference:

- Email
- Telephone
- Mail

Follow-Up Survey Contact Preference:

- Email
- Telephone
- Mail
- N/A

Continue

Version 9.0.1 - 13JAN2015



IDCRP-037 TravMil

Study ID: T50097-1 Enrollee Pre-travel Group #5022

Enrollment Survey Launch

Departure Date (dd/mon/yyyy)

1 7 / F e b / 2 0 1 5

Return Date (dd/mon/yyyy)

2 4 / M a r / 2 0 1 5

Is the subject part of a group enrollment?

- No
- Yes; Group Number 5 0 2 2

Will this subject complete the travel itinerary for the group?

- No
- Yes

How will the enrollment survey be completed?

- The subject will complete the survey on the tablet
- The CRC will complete the survey on the tablet

How will the itinerary be completed?

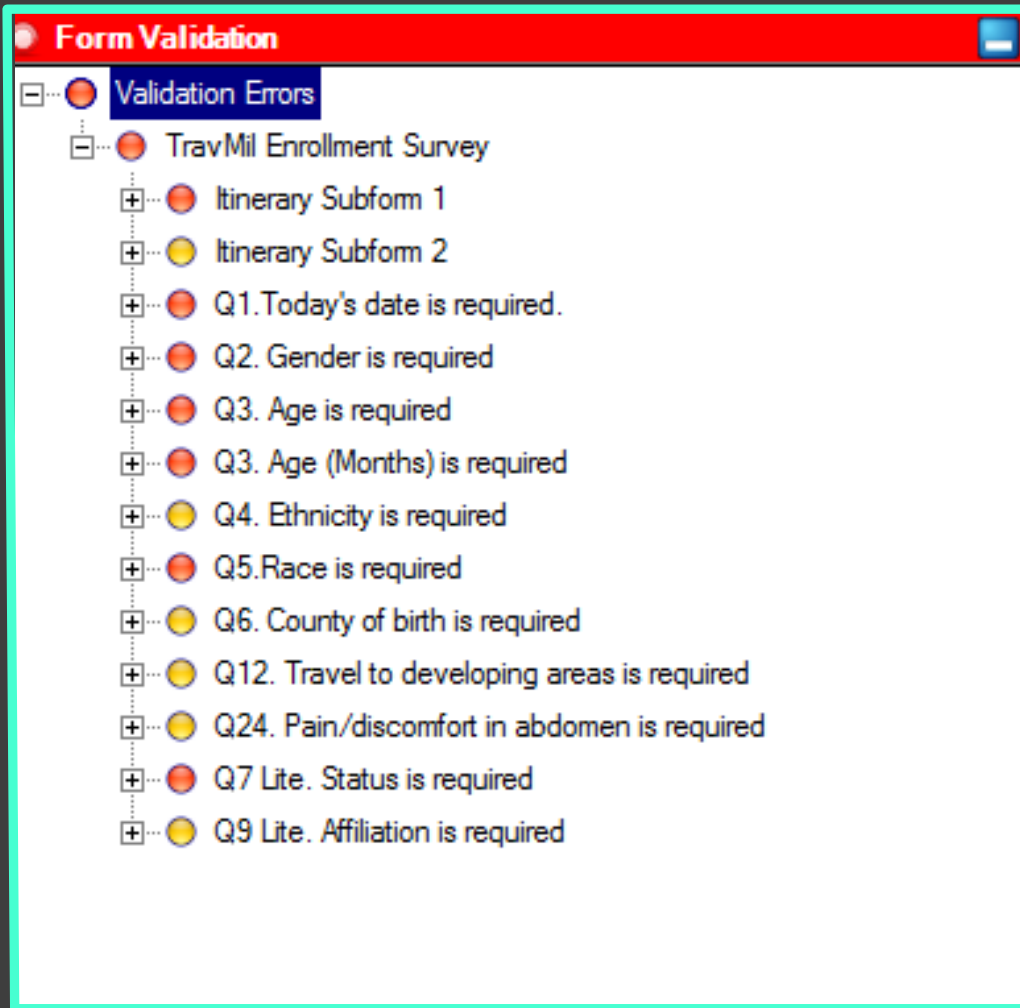
- The subject will complete the itinerary on the tablet
- The CRC will complete the itinerary on the tablet

Subject Completion

CRC Completion

<< Back to Enrollment

Version 9.0.1 - 13JAN2015



Purpose of Travel

(check all that apply)

- Military
- Providing Medical Support
- Missionary Work / Humanitarian
- Other
- Pleasure / Vacation
- Civilian Business
- Visiting Friends and Relatives
- Teaching/Study
- Adventure Travel / Ecotour (swimming/diving/climbing)
- Adoption

Purpose of Travel

(check all that apply)

- Military
- Providing Medical Support
- Missionary Work / Humanitarian
- Other

18. In the last 3 months, did you often* have discomfort or pain centered in your upper abdomen (above your belly button, or the pit of your stomach)?

- No (Skip to question 24)
- Yes

19. Check your best description of this symptom, or the one that bothers you more . . .

- Pain in your upper abdomen or stomach (skip to Question 21)
- Discomfort (that is not painful) in your upper abdomen or stomach

20. If you have discomfort, which of the following describe your discomfort? (check all that apply)

- Nausea
- Bloating (a sensation of upper abdominal swelling)
- Feeling full after eating very little
- None of the above

21. Does your upper abdominal discomfort or pain usually get better or stop after you have a bowel movement?

- No or rarely
- Yes

22. When the upper abdominal discomfort or pain starts, do you usually have a change in your usual number of bowel movements (either more or fewer)?

- No or rarely
- Yes

Benefits

One front-end interface for all users

Pre-filled data based on setup of launch pages allows users to complete entries efficiently

Improves data quality by minimizing erroneous and inaccurate data entry

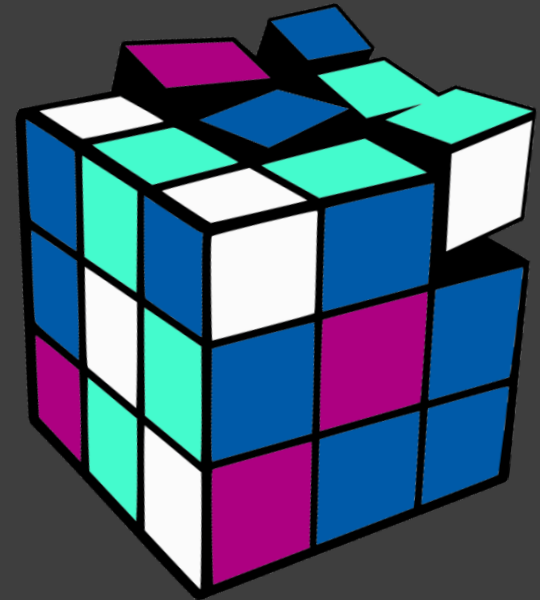


Considerations

Knowing rules for skip patterns based on user accessibility

New versions of surveys impact questions, responses, and screen design

Entry system to accommodate front-end programming for complex database design



The image shows a tablet displaying the ICRP-037 TruMI enrollment form. The form includes fields for Site Code, Study ID, Enrollment Date, and Site Address/Worker Signet. It also has radio buttons for 'The forest service' and 'The contractor', and checkboxes for 'Travelled to site' and 'This is not the part of employment group'. At the bottom, there are radio buttons for 'Email', 'Telephone', and 'Mail' for both 'Post-Travel Survey Contact Preference' and 'Follow-Up Survey Contact Preference', along with a 'Continue' button.

**THANK YOU
FOR YOUR ATTENTION!**

This is an identical copy of the ICRP-037 TruMI enrollment form shown on the left tablet, positioned on the right side of the central text.